

NAPA Newsletter

Winter 2012-2013
Vol. 27



Annual Meeting

**Friday, April 12, 2013
1pm**

Federal Building
Midwest Archeological
Center, Room 497
Centennial Mall & O Sts
Lincoln, NE

Informal reception will
follow.

Conference call capabil-
ity will be available.

Agenda will follow at a
later date.

MWAC's Friday Arche-
ology talk will be held at
4:00pm. See pg 6 for
details.

You will need a valid id
to enter the Federal
Building.

Call for Membership

Know someone who
may be interested in
joining NAPA? Email
[NAPA](mailto:NAPA@nps.gov), call 402-471-
4766 or go to the [NAPA
website](http://www.napa-nps.org) & click on
"Membership Applica-
tion Form".

NAPA Members Elect New Officers

NAPA welcomes three newly elected
officers. They began their duties on
September 1, 2012, & will serve until
August 31, 2014.

President Cynthia Wiley is returning for
her second term as an officer, previ-
ously serving as secretary/treasurer.
She is the registrar & an archeologist
with the National Park Service, Midwest
Archeological Center.

Vice-President Brad Logan is research
associate professor in anthropology at
Kansas State University.

Nolan Johnson is an archeologist with
the Highway Archeology Program at the
Nebraska State Historical Society.

Thank you to outgoing officers Peter
Bleed & Matthew Jones. They served
from September 2010 through August
2012.

2012-2013 Board Members

President: Cynthia Wiley (registrar/archeologist at MWAC/NPS; Vice President:
Brad Logan (research associate professor at KSU); Secretary/Treasurer: Nolan
Johnson (archeologist in Highway Archeology Program/NSHS); At-Large Mem-
bers: Kelli Bacon (preservation archivist in SHPO/NSHS), Dawn Bringelson
(archeologist at MWAC), Austin Buhta (archeologist at Archeology Lab Augus-
tana College), Bill Hunt (retired archeologist with MWAC & adjunct professor at
UNL).

2013 Board Election & Annual Meeting Agenda

At the annual meeting, we will be putting together a
slate of candidates for the 2013 NAPA at-large
board election. We will be electing 4 at-large board
members. Please bring your nominations to the
meeting, including self nominations. According to our
bylaws, the election must occur within 30 days after
our annual meeting.

We will also be announcing the William Duncan
Strong Memorial Award winner.

Do you have any items you would like brought up at
NAPA's annual meeting? Please email them to
[NAPA](mailto:NAPA@nps.gov) or call 402-437-5392 x138.

Even if you don't submit an agenda item, come to
the meeting to help discuss the future of our organi-
zation.

Dues Reminder

Membership fees for
2013 are now due! Dues
remain at \$15 for Regu-
lar, Institutional, & Dual
members & \$10 for Stu-
dent, Subscribing, & Af-
filiated members. Make
checks payable to NAPA
& mail to: Kelli Bacon,
1500 R St, PO Box
82554, Lincoln NE
68501-2554 or use our
new PayPal account
(see the announcement
on pg. 4).

Don't remember if you've
paid? Email [NAPA](mailto:NAPA@nps.gov) or
call 402-471-4766.

Letter from the President

As we enter the 27th year of serving the professional & amateur communities of Nebraska archeology, I look forward to continuing the high quality precedent set by previous NAPA presidents. Archeology remains a special interest in the hearts of the public & to quote a former professor of mine, "the best thing since perforated toilet paper!"

My foremost goal as president is to increase the interaction between the NAPA Board, the general membership, & public. This newsletter is a great example of how we've traditionally achieved such communication. The continued trend toward electronic distribution will serve us well if finances grow tighter. This year we've sought to build upon that trend with more frequent information distribution through emails from Kelli Bacon, our membership coordinator, At-Large Board Member, & newsletter editor. In November 2012, the NAPA Facebook page launched, allowing us to share the latest NAPA news, outreach events throughout the region, conference dates, & interesting archeology news. Thus far this has proved a low-cost way to interact frequently with a wider audience. We've established a NAPA email address (nebraska.archeologists@gmail.com) that will remain a stable communication portal through changes in leadership. This also allows the Board members to protect their work & private emails from unwanted solicitation. We are also working on setting up PayPal to allow us to receive credit card payments for membership & journal sales (see pages 5 & 6 for more information).

In terms of finances, NAPA remains in stable condition & in the black. However, membership is declining while journal costs rise. Sources of income for NAPA may need to be examined in the not-too-distant future. In the meantime we always welcome additional members for the organization.

In outreach news, this year NAPA has sponsored Explorer Post #25, a Lincoln-area group of ten middle & high school students looking to learn about archeology & archeological careers. Peter Bleed has enthusiastically led Post #25 with help from multiple other local NAPA members in archeology facilities throughout the city.

I want to emphasize that Board Meetings are open to attendance by the general membership. According to NAPA by-laws, only the seven Board members may vote at Board meetings, but this does not mean the meetings are closed events. All members are welcome to bring suggestions, questions, issues, etc. before the Board at any meeting. I ask only that you please let us know in advance so that we can add you to the agenda.

My predecessor focused the Board on financial health while seeking to serve the membership. Today, I hope that we can continue that course throughout current developments, uncertain fiscal climates, & in advance of exciting events on the horizon. We are quickly approaching the 30th anniversary of NAPA in 2016. Meeting all our goals will take the energy & enthusiasm of our entire membership, not just a few of us sitting in a room in Lincoln. I encourage all of you to be involved in & to engage with Nebraska archeology through your membership in the Nebraska Association of Professional Archeologists.

Thank you. For those of you participating in the upcoming field season, safe travels & happy troweling.

Cynthia Wiley

Membership Statistics

Membership Types		New Members in 2012-2013			
Regular	76	Jason Bassett	student	Augustana College (Sioux Falls, SD)	Lincoln, NE
Affiliated	3	Ashley J. Barnett	student	Midwest Archeological Center	Lincoln, NE
Dual	3	Laura Bender	student	Midwest Archeological Center	Lincoln, NE
Institutional	4	Mark Howe	regular	IBWC.gov	El Paso, TX
Student	11	Janice A. McLean	regular	R. Christopher Goodwin & Assoc.	Lawrence, KS
Subscribing	10	Shannon Ryan	regular	R. Christopher Goodwin & Assoc.	Lawrence, KS
		Douglas Shaver	regular	Quality Service, Inc.	Rapid City, SD
		Courtney Ziska	regular	Nebraska State Historical Society	Lincoln, NE

States with Members											
Nebraska	51	Iowa	7	Michigan	1	New Mexico	1	South Dakota	7	Wyoming	3
Arkansas	1	Illinois	2	Minnesota	1	Oklahoma	3	Texas	3	Unknown	1
California	1	Indiana	1	Missouri	4	Pennsylvania	1	Virginia	1	TOTAL: 107	
Colorado	6	Kansas	8	North Dakota	2	South Carolina	1	Wisconsin	1		

Upcoming Conferences

[Annual Caddo Conference](#)

Feb. 22-23, 2013; Tulsa, OK

[Colorado Council of Professional Archaeologists](#)

March 14-17; Denver, CO

(see announcement on pg. 2-3)

[Flint Hills Archaeological Conference](#)

Mar 22-23, 2013; Manhattan, KS

(see announcement on pg. 3)

[Computer Applications & Quantitative Methods in Archaeology](#)

Mar 25-28, 2013; Perth, Australia

[Society for American Archaeology](#)

Apr. 3-7, 2013; Honolulu, HI

[Society for Industrial Archaeology](#)

May 30-June 2, 2013; Minneapolis/St. Paul, MN

[Plains Anthropological Conference](#)

Oct. 2-5, 2013; Loveland, CO

[American Cultural Resources Association](#)

Oct. 9-12, 2013; Washington, D.C.

[Midwest Archaeological Conference](#)

Oct. 24-27, 2013; Columbus, OH

[Society for Historical Archaeology](#)

Jan. 8-12, 2014; Québec City, Québec, Canada

35th Annual [Colorado Council of Professional Archeologists Conference \(CCPA\)](#)

March 14-17, 2013 at [History Colorado Center](#), Denver, CO

Presentation Abstracts: Please send abstracts in a Word document to [Norma Crumbley](#) by Feb. 8. If you have a PowerPoint presentation please submit it to Norma by March 13. If the file is too large, please use [www.largedocument.com](#) to submit the file to her.

Tentative Schedule: Thursday: Early Bird Party; Friday: morning business meeting, board lunch, afternoon papers,

evening banquet; Saturday: papers; Sunday: field trips.

Receptions: The Thursday evening Early Bird Party will be held at [Wynkoop Brewery](#) from 5-9pm. The Friday evening banquet with keynote speaker will be held at the Mountain View Room, History Colorado from 6:30-9pm.

Further Information: Lodging is at the [Sheraton Denver Downtown](#). Rates begin at \$109/night. Group rate code: Colorado Council of Professional Archaeologists (CCPA). Reservations must be made by Feb. 28 to get the conference rate.

Registration: Please complete the [registration form](#) by March 1. Registration will be open on-site during the conference, but will cost \$10 more..

Sponsors: Sponsorship opportunities exist for hosting of a variety of conference events, including refreshments/coffee accompanying the meeting, banquet services (beyond food; e.g., cash bar availability), & the early bird happy hour. Please contact [Scott Phillips](#) / (303) 487-1183 at SWCA to coordinate sponsorship contributions.

35th Annual [Flint Hills Archaeological Conference](#)

March 22-23, 2013 at Kansas State University, Manhattan, KS

Presentation Titles & Abstracts: Fifteen to 20 minute presentations, panel discussions, & interactive activities pertaining to archaeology & stewardship in the Central Plains are invited. Please send titles & abstracts electronically to [Donna C. Roper](#) by March 1. The room has PowerPoint & document camera projectors, & internet access.

Tentative Schedule: Presentations will start Friday morning & extend into Saturday with a special Friday evening reception. The exact start & end times for the presentations on Friday & Saturday will depend on number of paper titles & abstracts received. A more precise schedule will be announced on the website in March.

Reception: Conference attendees are invited to explore the immersive experience & exhibits at the NEW [Flint Hills Discovery Center](#) in downtown Manhattan at a reception from 6:00 to 8:30 pm on Friday, March 22. The reception will feature heavy appetizers & a cash bar.

Exhibits: Several tables will be available for organizations wishing to have exhibits.

Further Information: Lodging information & directions to Manhattan, Kansas State University, parking areas, & Leasure Hall will be available on the Conference website by early March. A visitor permit is required for parking on campus on Friday. They will cost \$5.00 & be available at the Information Kiosk or Parking Garage at 17th & Anderson Avenues. For additional information, contact [Lauren W. Ritterbush](#).

Registration: Registration will be open on-site during the conference; There are no registration fees. However, we would appreciate knowing in advance roughly how many people will be attending, especially the evening reception. Please complete the brief [registration form](#) by March 1.

Sponsors: Department of Sociology/Anthropology/Social Work, Kansas State University; Historic Preservation Fund grant; Association of Professional Archaeologists of Kansas. Partial funding for this Conference is provided by the National Park Service, Department of the Interior through an Historic Preservation Fund grant from the Kansas Historical Society. Content & opinions expressed do not necessarily reflect the views or policies of the Department of the Interior or the Kansas Historical Society.

Training Opportunities

[National Preservation Institute](#)

The National Preservation Institute holds seminars on a variety of cultural resource topics in locations throughout the country. Visit the website for dates, locations, & information about these & other courses. Seminars include, but are not limited to:

Identification & Management of Traditional Cultural Places

Section 106: An Introduction

Section 106: A Review for Experienced Practitioners

Section 106: Agreement Documents

Conflict Resolution & Negotiation Tools for Cultural & Natural Resource Projects

Cultural & Natural Resources: An Integrated Management Strategy

GIS: Practical Applications for Cultural Resource Projects

Renewable Energy Development: Impacts on Cultural Resources

Consultation & Protection of Native American Sacred Lands

NAGPRA & ARPA: Applications & Requirements

NAGPRA: Determining Cultural Affiliation

NAGPRA: Summaries, Inventories, & Federal Register Notices

NAGPRA: Writing & Managing a Successful Grant

Native American Cultural Property Law

Archaeological Curation & Collections Management in conjunction with Conservation Strategies for Archaeologist

Digital & Film Photography of Cultural Resources

Northern States Conservation Center

The Northern State Conservation Center holds on-line courses on a variety of museum topics. Visit the website for more information. Classes include, but are not limited to:

MS215: Care of Archaeological Artifacts from the Field to the Lab

Job Postings

http://www.sha.org/job_board/job_board.cfm

www.shovelbums.org

www.eculturalresources.com/jobs.php

www.avuecentral.com

www.saa.org/Careers/JobAnnouncements/tabid/256/Default.aspx

www.fedbizopps.gov

www.archaeologyfieldwork.com

Announcements

Pay Your Dues with PayPal

NAPA is excited to announce that you may now use PayPal to pay for annual dues & back issues of *Central Plains Archeology*. Future dues notices will include an invoice with a link to pay on-line with a debit card, credit card, bank account, or with your PayPal account. You do not need a PayPal account to use this service. There will be a small transaction fee from NAPA to cover service charges.

NAPA is also working on having a card reader available so we can take payments for journal sales & dues at conferences. There will also be a small transaction fee for this.

If you have any questions, or would like to use PayPal to pay for your dues or a journal, please contact [NAPA](http://www.napa-usa.org).

NAPA has a New Email Address

NAPA has a new email address:

nebraska.archeologists@gmail.com.

You may use this email to contact the board or if you have any questions/comments/concerns, but do not know who to contact.

"Like" Us on Facebook

NAPA has a new Facebook [page](#). Right now, NAPA is using it to post meeting announcements, job opportunities, & archeology related articles. "Like" us to get information not included in our newsletter or in emails. We hope to get

more participation from our membership & friends as our group grows. If you would like to submit something to the page, email [NAPA](#).

Central Plains Archeology Journal Update

Volume 14 will be a technical treatment of the Engineer Cantonment site. We expect a draft in June. There have been no submissions for volume 15.

Submissions for future volumes of the *CPA* are welcome.

Please send them to one of our co-editors: [Amy Koch](#), Fort Robinson Museum, PO Box 304, 3200 W Hwy 20, Crawford NE 69339 / 308-665-2920; or [Donna Roper](#), Dept. of SASW, 204 Waters Hall, Manhattan KS 66506 / 785-532-6865.

Midwest Archeological Center Lecture Series

Fridays during March & April, 2013, 4:00-4:45pm
Robert V. Denney Federal Building, 100 Centennial Mall
North, Room 497

Anne Vawser & Tim Schilling (March 1)

Driving bison over the edge: buffalo jump research at Wind Cave National Park, South Dakota

People & bison have coexisted for about 10,000 years, but that relationship has changed through time. Vawser & Schilling discuss recent investigations & how better understanding of the past can help us better manage resources in the present.

Andrew LaBounty (March 29)

Past Ojibwe Cultural Landscape of Voyageurs National Park, Minnesota

Historic photos provide a powerful source of information about the past, & are especially useful when added to other information. LaBounty shares how aerial photos from 1927 were combined with archeology, conducted over the past 30 years, to learn more about historical Native American occupation in this National Park.

Amanda Davey (April 12)

GIS & predicting the past at Indiana Dunes National Lake-

shore, Indiana

The Center curates archeological data collected for nearly five decades at over 50 parks in the Midwest region, allowing archeologists to address "big picture" questions about the past. Davey presents research combining these data with new archeological work to delve into how peoples used their environments over thousands of years.

Jay Sturdevant (April 26)

Landscapes of Change at Knife River Indian Villages National Historic Site, North Dakota

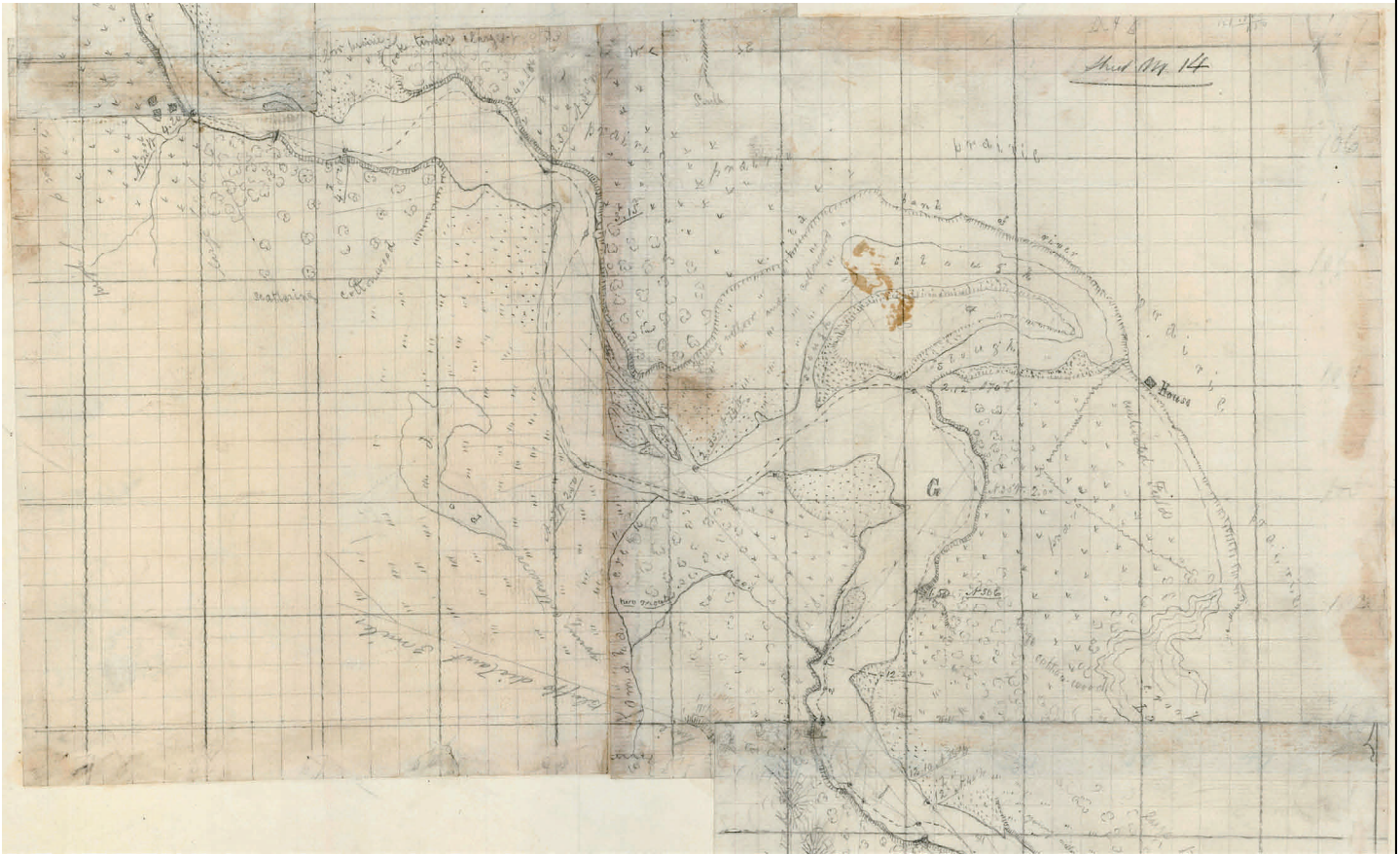
The archeological study of landscapes provides insight into how present & past peoples lived & worked on the land. Sturdevant shows how remote sensing technologies reveal changes in land use from Native American villages to Euroamerican homesteading & the establishment of a National Park unit.

All talks are free & open to the public. No registration is required, but all visitors must have a valid photo ID & pass through a security screening area for entry into the Denney Federal Building. Limited visitor parking is available on the ground floor of the Federal parking garage, at "N" Street & Centennial Mall. Call 402-437-5392 or email [Dawn Bringelson](#) with questions.

Recent Publication by the State Historical Society of North Dakota

There is a recent publication by the [State Historical Society of North Dakota](#): "*Lt. G.K. Warren's 1855 & 1856 maps of the Missouri River*" compiled by Graham A. Callaway & W. Raymond Wood, 2012. The maps show cultural features & the ecological setting of the time. It will be helpful not only to historians & archaeologists, but to those interested in the evolution of the ecology of the river. This map shows a few

houses in a stretch of the river below Sioux City, but others show Sioux city itself (8 buildings!), Omaha (many buildings & the state house), & trading posts & other cultural features along the river from the Kansas-Nebraska boundary to a point 60 miles into the state of Montana. Purchase the book from SHSND [here](#) for \$39.95. Non-North Dakota residents may purchase it with no tax, but with \$5.95 for postage.



Genoa U.S. Indian School Foundation Scholarship

The [Genoa U.S. Indian School Foundation](#) is offering a \$1,000 scholarship (\$500 per semester) to a descendent of a Genoa U.S. Indian School student. Since the focus of the Genoa School was to provide an education for Native Americans, we feel honored to continue this tradition by offering a scholarship to a descendent so they might fur-

ther their education.

For further information & an application, e-mail [Nancy Carlson](#), call 402-993-6055, or by write to the Genoa Indian School Foundation, Box 382, Genoa NE 68640. The deadline for applications is May 15th.

Nebraska Archeological Society Scholarship

The [Nebraska Archeological Society](#) is offering a \$250 academic scholarship for full-time graduate or undergraduate students pursuing a degree in archaeology enrolled in the fall semester of the 2013-14 academic year. The stu-

dent must attend school in Nebraska or be a Nebraska high school graduate. For further information & to obtain an application, visit their [scholarship](#) website. The completed application must be returned by May 15, 2013.

Nebraska Archeological Society Artifact Show

The 9th Annual Nebraska Artifact Show hosted by the [Nebraska Archeological Society](#) will be held in the Ag Pavilion building at the Seward County Fairgrounds in Seward, Nebraska, on Saturday, August 17, 2013, from 9am to 5pm. Along with artifact displays, there will be several speakers

& activities.

For more information, email [Kevin Hammond](#), NAS president, or visit their [website](#).

William Duncan Strong Award

The William Duncan Strong Award honors any individual who has in the opinion of the Board of the Nebraska Association of Professional Archeologists (NAPA) made a substantial contribution to the archeology of or preservation in Nebraska. Past winners include Waldo Wedel (1994), James & Delores Gunnerson (1995), David Gradwohl (2009), & W. Raymond Wood (2009).

NAPA board members are seeking nominations for the 2013 William Duncan Strong Award to be formally announced at the Annual Meeting in April 2013 in Lincoln, NE. Eligible individuals include both living & deceased professionals, practicing or retired. Eligible individuals need not be NAPA members.

Nominations must be submitted no later than 11:59 pm, March 29, 2013. Submissions must include the name

& contact information for the nominee (posthumous nominations require next of kin information), contact information for nominator(s), & a detailed description of the nominee's contribution to Nebraska archeology and/or preservation that does not exceed 2,000 words.

Nominations may be submitted electronically to Nebraska.archeologists@gmail.com with "W. D. Strong Award Nomination" in the subject line or mailed to:
Nebraska Association of Professional Archeologists
Attn: W.D. Strong Award Committee
P.O. Box 82554
Lincoln, NE 68501

Please send questions to Nebraska.archeologists@gmail.com or contact Cynthia Wiley, NAPA President at 402.437.5392 ext. 138.

Articles

2012 Nebraska State Historic Preservation Office Archeology Activity by Terry Steinacher

The [State Historic Preservation Office](#) (SHPO), a division of the [Nebraska State Historical Society](#), conducted 766 Section 106 reviews for projects potentially affecting archaeological sites. This included 202 archaeological survey reports & 9,697 surveyed acres. Under a contract with SHPO, Augustana College in Sioux Falls, SD, surveyed 10,267 acres in Sarpy, Washington, & Burt Counties. They recorded 112 new sites from the surveys. SHPO awarded a new survey contract to Augustana College for a 20,000 acre survey in Lancaster & Gage Counties.

SHPO completed an archiving project for site files & survey reports housed at the Fort Robinson facility. We scanned survey reports, completed for numerous Section 106 projects, as well as site files, photos, & slide collections. This information will be placed in safe storage against possible destruction of the paper files due to a natural disaster.

The Office, in cooperation with Amy Koch (Nebraska State Historical Society Highway Archeologist), participated in the excavation of the location of a former 1891 Officers'

Quarters at the Fort. This building is scheduled for reconstruction by the Nebraska Game & Parks Commission in 2013. Excavation located the former foundation lines & tested into a basement feature.



Officer's quarters at Fort Robinson

New Archeology at Fort Robinson, Nebraska (May 2012) by Amy Koch

As a result of a donation by a private citizen, the [Nebraska Game & Parks Commission](#) plans to reconstruct one of the Officers' Quarters or B-14, formerly located on the north side of the new parade ground at [Fort Robinson State Park](#) in northwestern Nebraska. The reconstructed quarters will be used as an interpretive center, group lodge, & meeting room. The original building (circa 1891) was a two-story frame structure with sandstone foundation.

Early in the planning stages it was agreed that archeological investigations would be required prior to reconstruction to provide necessary information regarding the footprint of the former building & possibly recover other structural evidence & building hardware needed for accurate reconstruction. A partial basement feature near the rear of the structure had been documented in building plans. It was believed investigation of this feature might yield a sample of artifactual material for an interpretive display.

To accomplish the above objectives, the Nebraska Game & Parks Commission contracted with the [Nebraska State Historical Society](#) (NSHS) to conduct the necessary archeological research prior to building reconstruction. NSHS archeologists headquartered at the Fort Robinson Museum, Amy Koch & Dr. Terry Steinacher, were placed in charge of the field work & overall project investigations. The field crew consisted of fourteen individuals including NSHS staff members & an enthusiastic group of volunteers. The field work was completed in four days.

The investigators were successful in locating the former foundation remains & footprint of the original B-14 Officer's Quarters. It became clear from the excavation units that the original building was a basic "T" layout similar to archive plans for other U.S. Army officers' quarters from this era. A wide front was pinched inward near the center of the side walls & then the main structure was extended back in a narrower structure. Side porches were present on the two narrow sides. Drain pipes in several excavation squares confirmed the original structure corners. The pipes would have been connected to down spouts from the roof & eventually led underground to an outlet.

It also became clear the building was remodeled, probably prior to or during World War II. The side porches were removed & foundation extensions were constructed to the back to coincide with the front side walls. New outside walls were constructed up to & including a second floor which now enclosed additional inside space for quarters.

The basement area noted in plans was investigated by several test squares to confirm the feature's existence & determine if significant artifactual material was present that would add to the interpretation of the building. The basement was located, but unfortunately it was filled with rubble

& large amounts of furnace coal, slag, & clinker. No further excavation was therefore conducted into the basement.

Because the structure was built at the turn of the twentieth century & subject to intense salvage when it was razed, the recovered artifact inventory was fairly limited in research potential. Only a few artifact classes yielded information useful for interpretation & display. Many of the artifacts undoubtedly represent the different periods of construction & reconstruction. The artifacts were typical for a late nineteenth century structure & included square & wire nails, window glass shards, foundation rubble, burned coal, a door latch, a few historic ceramic sherds, a partially complete bottle, a picket pin, & a pewter or lead decorative finial (a crowning ornament) that resembles a bulldog head. The report was completed in December of 2012 & submitted to the Nebraska Game & Parks Commission.



Decorative finial resembling a bulldog head.



Field Crew.

Archeology Lab Augustana College

The [Archeology Lab](#) at Augustana College, Sioux Falls, SD, is working on the 2012-2013 archeological survey contract sponsored by the Nebraska State Historic Preservation Office & funded with Historic Preservation Funds from the National Park Service. This contract includes survey of 20,000 acres along in Lancaster & Gage Counties with a special survey of historic trail ruts in those counties. Fieldwork is complete for Lancaster County & will begin in Gage County this spring.



An intact hearth feature in a cutbank in Lancaster County.



Overview of a stream valley in the project area.



Field crew flagging-off a lithic scatter area.

Itskari Phase Report by Michael Page

The Itskari phase has been the most neglected taxon of the Central Plains tradition (Steinacher & Carlson 1998). Itskari phase sites are concentrated in the Loup River valley of central Nebraska, but also occur in southwestern Nebraska & as far west as the high plains of Wyoming. Much of what is known of the complex comes from extensive excavations in 1939 & 1940 along Davis Creek in Greeley, Howard & Sherman counties & near the town of Fullerton in Nance County. Unfortunately results of these investigations have not been fully reported. Over the past 40 years several more Itskari phase sites have been investigated in Boone, Merrick, Buffalo, Frontier & Red Willow counties as well as several sites in southeastern Wyoming (Bleed 1974; Grange 1980; Koch 2002; Page 2009; Peterson & Holen 1996; Steinacher 2009).

Michael Page with the [Office of the Wyoming State Archaeologist](#) & Amy Koch with the [Nebraska Highway Archaeology Program](#) are currently preparing a report documenting the ceramic & lithic assemblages from 11 previ-

ously unreported sites in the Davis Creek & Fullerton localities. A new paradigmatic system for the classification of Central Plains tradition pottery is presented. The Itskari phase ceramic sample is then compared with 2 published Smoky Hill phase assemblages (Ludwickson 1999; Wedel 1959), 5 Upper Republican phase assemblages (Gilliland 2003; Roll 1968; Sigstad 1969) & 4 Itskari phase assemblages (Bleed 1974; Koch 2002; Peterson & Holen 1996; Steinacher 2009) using detrended correspondence analysis, Brainerd-Robinson coefficients of similarity & a modified version (Zeitlin 1994) of the Jacard index of similarity. Results of the ceramic analyses reveal some of the house assemblages in the sample area are markedly similar to Upper Republican phase assemblages & some are noticeably similar to Smoky Hill. Most of the Itskari phase sites, however, are distinct from other Central Plains tradition taxa (Figure 1).

Stylistic attributes of projectile point assemblages are another trait distinguishing the Itskari & Upper Republican

phases. The projectile point assemblages from several sites in the Davis Creek locality are compared with several Upper Republican assemblages in the Medicine, Prairie Dog & Lost Creek localities using Brainerd-Robinson coefficients of similarity. Initial results indicate side notched points with basal notching are far more common in Upper Republican phase assemblages than in Itskari phase assemblages (Page 2009).

One of the often cited characteristics of the Itskari phase is the high incidence of Hartville Uplift cherts & quartzites & White River group chalcedony from the high plains of Nebraska, Colorado & Wyoming (Ludwickson 1979; Blakeslee 1999). High proportions of White River Group chalcedony from Upper Republican phase sites has been used to infer periodic abandonment of farmsteads in the Medicine Creek

locality & utilization of the high plains in response to drought (Roper 2009). However, the pattern of raw material use in the Itskari phase sites of the Davis Creek locality suggest regular & continuous acquisition of western lithic resources (Page 2009). An analysis of the lithic assemblages conducted by Curt Peacock (ca.1980's) showed Hartville Uplift and/or White River Group chalcedony were the dominant material types in most Davis Creek sites.

The report will also address variation in house size & construction, size & organization of storage features, settlement patterns & external cultural relationships. This study will hopefully shed much needed light on the Itskari phase as well as the Central Plains tradition as a whole & perhaps spark a renewed interest in the archaeology of the Late Prehistoric period of the Central Plains.

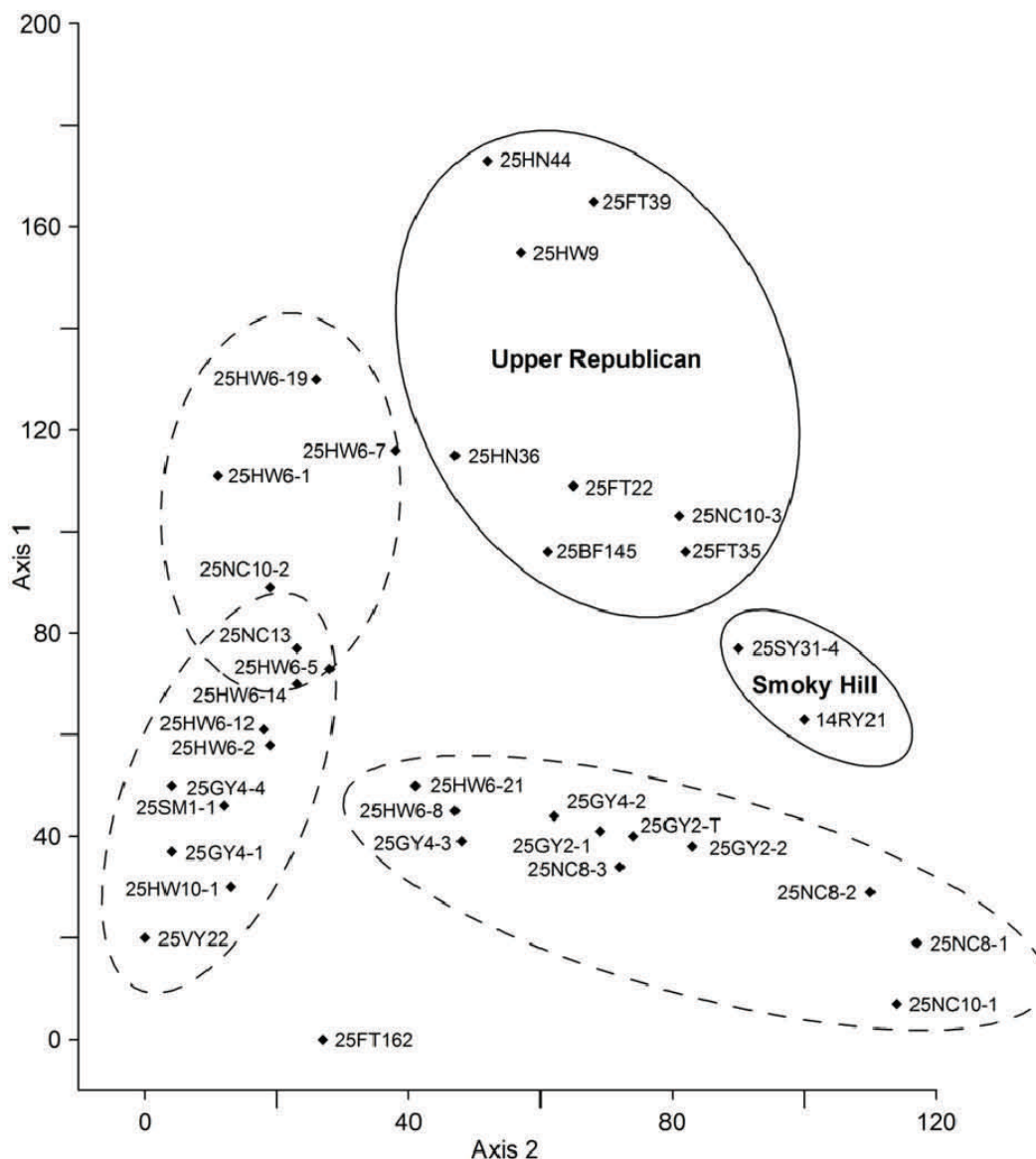


Figure 1. Detrended correspondence analysis using 19 descriptive rim categories. Eigenvalues of Axes 1 & 2 account for 80% of the variation.

WORKS CITED

Blakeslee, Donald J.

1999 Waconda Lake: Prehistoric Swidden-Foragers in the Central Plains. *Central Plains Archeology* 7(1):1-170.

Bleed, Peter

1974 *A Report on 1973 Archaeological Investigations in the Wood River Valley, Buffalo County, Nebraska*. Department of Anthropology, University of Nebraska. Submitted to National Park Service, Contract No. 2-920-P2-007, CX-1595-2-0193. Copies available from the University of Nebraska, Kearney.

Gilliland, Eric J.

2003 *Paradigmatic Classification of Medicine Creek Upper Republican Pottery*. Unpublished Master's thesis, Department of Anthropology, University of Missouri-Columbia, Columbia.

Grange, Roger T. Jr.

1980 *Salvage Archaeology in the Red Willow Reservoir, Nebraska*. Nebraska State Historical Society Publications in Anthropology No. 9. Nebraska State Historical Society, Lincoln.

Ludwickson, John K.

1978 Central Plains Tradition Settlements in the Loup River Basin: The Loup River Phase. In: *Central Plains Tradition: Internal Development & External Relationships*, edited by Donald J. Blakeslee, pp. 94-108. Report 11. Office of the State Archaeologist of Iowa, Iowa City.

1999 Ceramics. In *Archeology of the Patterson Site: Native American Life in the Lower Platte Valley, A.D. 1000-1300*,

pp. 29-52. Nebraska State Historical Society. Submitted to the Nebraska Department of Roads, Project STPB-77(30). Copies available from the Nebraska State Historical Society.

Page, Michael K.

2009 *The High Plains Upper Republican Reconsidered: Stylistic & Petrographic Analyses of Central Plains Tradition Ceramics from the High Plains*. Unpublished M.A. thesis, Department of Anthropology, University of Wyoming, Laramie.

Roll, Thomas

1968 *Upper Republican Cultural Relationships*. Unpublished M.A. thesis, Department of Anthropology, University of Nebraska, Lincoln.

Roper, Donna C.

2009 100° W Longitude: Exploring Cultural Dynamics at the Western Edge of the Central Plains Tradition. *Central Plains Archaeology* 11:21-40.

Steinacher, Terry L.

2009 The Ceramic Assemblage from 25FT162, Frontier County Nebraska. *Central Plains Archaeology* 11:41-70.

Steinacher, Terry L. & Gayle F. Carlson

1998 The Central Plains Tradition. In *Archeology on the Great Plains*, edited by W. Raymond Wood, pp. 235-268. University Press of Kansas, Lawrence.

Wedel, Waldo R.

1959 *An Introduction to Kansas Archeology*. Bulletin No. 174. Bureau of American Ethnology, Smithsonian Institution, Washington D.C.

Archeological Salvage Research Along the Emigrant Trail by George Zeimens

Over the past several years the Western Plains Historic Preservation Association (WHPA) has conducted salvage studies at several historic locations in Western Nebraska & Eastern Wyoming. Nebraska sites include Fort John in Helvas Canyon & a location known as Ficklins on Buffalo Creek which was apparently one of the original Robidoux trading facilities. Wyoming sites include the Bordeaux trading post & associated cemetery, the Ash Point trading post which was later a Swan Land & Cattle Company headquar-

ters, the Red Cloud Indian agency site & a trading post known as Fort Bernard. Excavations the last couple of years uncovered the entire foundation of the Gratiot House at Fort Bernard. The Gratiot House was used to store & distribute gratuities to the Indians under the Treaty of 1851. The building was raided by Indians after the Grattan Massacre. Work continues at Fort Bernard as several additional buildings are slowly being delineated.

MWAC work at Sanson Site in Black Hills of South Dakota in 2012 by Anne M. Wolley Vawser

The [Midwest Archeological Center](#) (MWAC) conducted fieldwork at the Sanson Site in the Black Hills of South Dakota in August & September 2012. The multi-component site includes a buffalo jump, village site, & possible cere-

monial features. Work at the site included pedestrian inventory, geophysical prospection, geoarcheological trenching, archeological excavations, & high resolution topographic mapping. Locals have known the site for a long time

as a buffalo jump with a visible drive line feature leading toward a cliff in the southern Black Hills, however, only limited excavations had been conducted at the site & a full inventory of site features had not been undertaken before.

The pedestrian inventory enlarged the site considerably while the other investigations increased our knowledge about activities at the site. McKean projectile points & smaller arrow points, radiocarbon dating of charcoal, & collagen dating of recovered bison bone indicate the site was occupied for at least 4000 years up through about 1400 AD. Geoarcheological trenching revealed large flooding events may have taken place in the valley, & limited bone deposits below the cliff face are additional evidence that bone may have been washed away sometime after 1400 AD. The inventory helped identify habitation areas as indicated by large numbers of stone circles & hide processing areas as evidenced by the large numbers of scrapers.

The site is on land that was a part of the Sanson Ranch for about 100 years. The family knew about the drive line, collected points they found on the surface, & removed some stone circles for cultivation, but otherwise the left the area as it was. It is now a part of Wind Cave National Park &

they plan to continue efforts to preserve the site, as well as possibly interpreting the site for park visitors. A full report on the investigations is currently being finalized. Additional studies being conducted at the site include a Traditional Cultural Property Study, a Cultural Landscape Inventory, & a vegetation study.



Drive lanes on the top of the bluff in the center of the photograph led bison to a ca. 100 foot drop at the bluff edge.

Research by Dale Henning

I still continue to work on several projects, some of which seem without end. There is renewed interest & activity on the part of the State of Iowa to preserve more of the Blood Run Oneota site in northwest Iowa/eastern South Dakota. The South Dakota State Parks system has added an important piece of property & are developing a new State Park, so a number of us here in Iowa are pushing progress on this side of the Big Sioux River. I am also re-investigating the western Iowa Correctionville Oneota sites, using collections that constituted part of my MA thesis published in 1961. Amazing to see how much progress has been made since that time in Oneota & Central Plains research & to see more evidence for regional relationships. Carl Falk is working with the bone & antler remains; we

hope to publish the results soon. A publishable manuscript on the stratified Woodland-Great Oasis Beals site should be completed soon as well. Work progresses sporadically on further investigations of Late Prehistoric - Early Contact period red stone (presumably much of it catlinite) pipes & tablets distribution patterns as well.

More progress will be made on these projects as we settle into our new home at a retirement center in West Des Moines. Here, we have a duplex & can take advantage of the activities we want while enjoying good space & privacy. I have a large office/laboratory in the lower level & no more shoveling snow, mowing lawn, etc., etc.

The Nebraska Highway Archeology Program, 2012 by Rob Bozell

During 2012, the Nebraska Highway Archeology Program (NHAP) hired three new staff members. [Katie Lamb](#) is our Staff Assistant; [Shaun Lynch](#) is an archeological technician; & [Nolan Johnson](#) is a Highway Archeologist. Former NHAP staff assistant Courtney Ziska earned her MA degree from UNL & is now a Highway Archeologist for the program. Nancy Carlson, Nic Fogerty, & Jenny Hildebrand were also on-staff during all or portions of 2012 on temporary appointments.

During 2012, NHAP completed Section 106 investigations & prepared compliance documents on behalf of the Federal Highway Administration (FHWA) for 393 proposed transportation projects statewide. In addition to background research & survey, these efforts also included test excavations at several archeological sites in Stanton, Furnas, Franklin, & Dawes counties. Staff also excavated tribally unaffiliated Native American burials discovered in a highway project borrow pit in Cass County. These remains have been repatriated under state law. Staff also com-

pleted a second draft of a Historic Preservation Procedures Manual for Nebraska Transportation Projects.

In 2012, NHAP began dusting off several 1960s through 1980s highway archeology excavation projects & began laboratory analysis & editing dormant report drafts. These include work at: the Early Archaic Logan Creek site; the Palmer Johnson site (a Central Plains tradition hamlet); Tonwontonga (the late 18th –early 19th century 'Big' Village of the Omaha Tribe); & the Larson site – a protohistoric Pawnee village. Work also continues on editing a manuscript on archeological investigations at Engineer Cantonment for summer 2013 submission to *Central Plains Archeology*.



Nic Fogerty, Karen Steinauer, & Courtney Ziska documenting archeological features at a project in Cass County.

A Final Note

I would like to extend a big personal Thank You to Curt Peacock, exhibits designer in the Nebraska History Museum at the Nebraska State Historical Society who is retiring after 41 years with NSHS. Prior to working in exhibits, he worked in the Archeology Office. You can find his name

on many artifact & photograph catalogs. He has been a big help to NAPA over the years by maintaining NAPA's portion of the NSHS website and doing layout for our *Central Plains Archeology* journal. NSHS & NAPA will miss him.

Kelli

NAPA

c/o Kelli Bacon

PO Box 82554

Lincoln NE 68501-2554